

FUJIFILM

instax mini Link 3TM

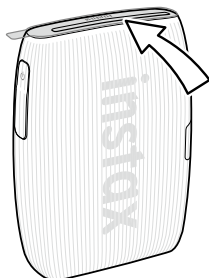
Smartphone Printer

User's Guide (Full version)



How to Peel off the Protective Cover

Please peel off the protective cover before use.



Note when handling the INSTAX MINI instant film pack

Do not open the Film door until all 10 film sheets of the INSTAX MINI instant film pack have been used. Opening the Film door will expose any remaining, unused film sheets, rendering the remainder of the film pack unusable.

Table of Contents

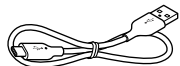
| | |
|---|----|
| Before Use | 3 |
| Notes on Disposing of the Printer | 3 |
| Part Names..... | 3 |
| Downloading the free INSTAX MINI LINK App onto your Smartphone..... | 4 |
| Charging the Battery | 4 |
| LED charging status indicator | 4 |
| Checking Level of Battery Charge | 5 |
| Loading the INSTAX MINI™ Instant Film Pack | 5 |
| Turning the Printer on/off..... | 6 |
| Checking the Printer Status with the LED..... | 6 |
| Pairing your Smartphone and the INSTAX MINI LINK 3 Printer; Printing | 7 |
| When Pairing for the First Time | 7 |
| When the Printer and Your Smartphone Are Already Paired | 10 |
| Unloading a used INSTAX MINI Instant Film Pack | 12 |
| Reprinting an Image | 12 |
| Controlling the INSTAX MINI LINK App with the Angle of the Printer and the Power Button | 13 |
| Controlling Zoom and Shutter When Using the INSTAX Camera Feature on the App | 13 |
| instaxAiR Studio™ App Feature | 14 |
| Important Notice for INSTAX AIR STUDIO Feature | 14 |
| Click to Collage App Feature in the INSTAX MINI LINK App | 14 |
| Specifications | 14 |
| Troubleshooting | 15 |
| IMPORTANT SAFETY NOTICE | 16 |
| Printer Care | 16 |
| Bluetooth® Devices: Cautions..... | 17 |

Before Use

Before using the printer, please locate the following accessory (included at purchase):

Accessory

- USB Type C cable (FZ00013220)



- ❗ The battery has not been fully charged at the factory. Be sure to charge the battery before using the printer. The free INSTAX MINI LINK App will need to be downloaded and paired with your Smartphone prior to initial use.
- ❗ Bundled USB Type C cable is dedicated to charge the Link printer.

Read 'IMPORTANT SAFETY NOTICE' (Page 16) for safety information.

Notes on Disposing of the Printer

A built-in lithium ion battery is located inside this printer.

When you dispose of the printer, follow your local regulations to ensure proper disposal.

For proper disposal in the United States at product end-of-life, please contact 1-800-800-3854 Option #1 INSTAX.

For proper disposal in Canada at product end-of-life, please contact 1-800-461-0416.

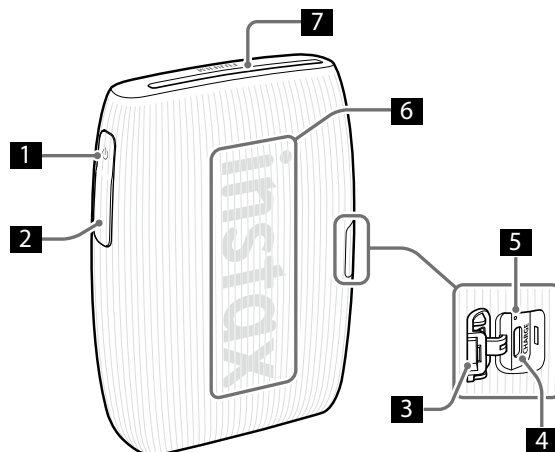
For proper disposal in Latin America at product end-of-life, please contact your local FUJIFLM distributor or dealer for disposal instructions.

- ❗ Do not attempt to remove the built-in battery. Injury may result.

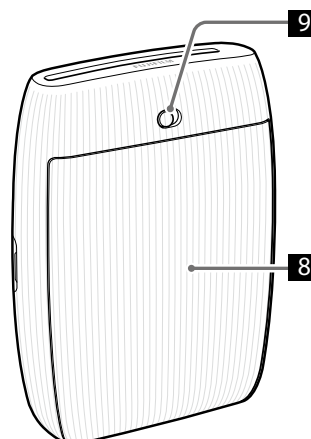
Part Names

- ❗ Before using the printer for the first time, fully charge the battery.

Front



Rear



- 1 Power button
- 2 Function button
- 3 USB Type C port cover
- 4 USB Type C port
- 5 Reset button^{*1}
- 6 LED^{*2}
- 7 Film ejection slot
- 8 Film door^{*3}
- 9 Film door lock

^{*1} If the printer does not work properly, press the Reset button to reset the printer.

^{*2} For details on LED indication status, see pages 4, 5 and 6.

^{*3} Printer uses INSTAX MINI instant film only (film sold separately).

Downloading the free INSTAX MINI LINK App onto your Smartphone

Please install the free INSTAX MINI LINK Smartphone App on your Smartphone before using the printer.

After downloading is complete, you have to pair your Smartphone and the printer.

- If you are using an Android OS Smartphone, please search for the INSTAX MINI LINK Smartphone App in the Google Play Store and install it.
*Requirements for Android OS Smartphones: Android Ver. 10.0 or higher with Google Play Store installed
- If you are using an iOS Smartphone, please search for the INSTAX MINI LINK Smartphone App in the App Store and install it.
*Requirements for iOS Smartphones: iOS Ver. 16.0 or higher
- Depending on your Smartphone model, you may not be able to use the INSTAX MINI LINK Smartphone App even if you have installed it and your Smartphone meets the above requirements.

Access the INSTAX MINI LINK App download site for the latest information on system requirements.

Scan to download the INSTAX MINI LINK Smartphone App



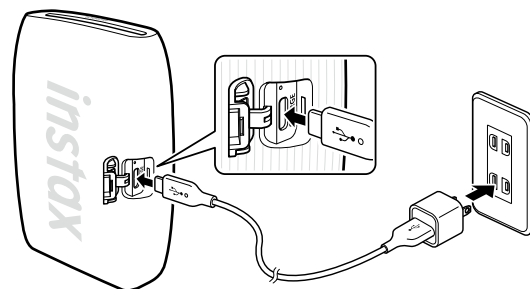
iOS



Android OS

The text QR Code itself is a registered trademark and wordmark of Denso Wave Incorporated.

Charging the Battery



Connect the printer with a USB AC adapter (sold separately) using the supplied USB Type C cable, then connect the USB AC adapter to an indoor power outlet. A USB AC adapter is not included with the INSTAX MINI LINK 3 Smartphone printer (though it may have been supplied with your Smartphone).

- You can print an image while charging is in progress.
- Charging time is approximately 1.5 to 2 hours.

LED charging status indicator

Check the charging status with your Smartphone when paired with the free INSTAX MINI LINK App.

For instructions on how to download the App, please see the "Downloading the free INSTAX MINI LINK App onto your Smartphone" section on page 4.

When the printer is turned on

| Indication | Charging status |
|--------------------------|-------------------|
| White LED (pulsing) | Not charging |
| Green LED (flashing) | Charging |
| Green LED (not flashing) | Charging complete |

When the printer is turned off

| Indication | Charging status |
|----------------------|--------------------------------|
| LED turned off | Not charging/charging complete |
| Green LED (flashing) | Charging |

Charging from a PC:

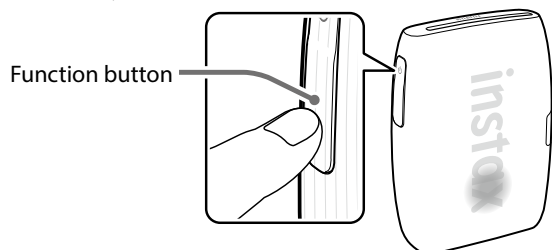
- Connect the printer and PC directly. Do not connect via a USB hub or keyboard.
- If the PC goes into sleep mode while charging, charging is discontinued. To continue charging, exit sleep mode and then reconnect the USB Type C cable.
- The battery may not be able to charge depending on the specifications and settings or conditions of the PC.

Notes

- The battery has not been fully charged at the factory. Be sure to charge the battery before using the printer.
- The battery cannot be removed.
- For notes about the battery, see "Printer Care". (p. 16)

Checking Level of Battery Charge

Pressing the Function button while the printer is turned on can check the battery level.



| LED | Battery level |
|-----|----------------------|
| | Low battery level |
| | Middle battery level |
| | High battery level |

Check the charging status with your Smartphone when paired to the free INSTAX MINI LINK App (Smartphone download required).

Loading the INSTAX MINI™ Instant Film Pack

NOTE

Do not open the Film door until all 10 film sheets of the INSTAX MINI instant film pack have been used. Opening the Film door will expose any remaining, unused film sheets, rendering the remainder of the film pack unusable.

- When you load the film pack, never press the two rectangular holes on the back of the film pack.
- Never use a film pack beyond its shelf life; otherwise, it may damage the printer.

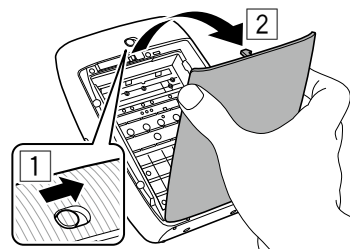
Use FUJIFILM INSTAX MINI Instant Film (sold separately) only. The INSTAX SQUARE® or INSTAX WIDE™ Instant Film Packs cannot be used.

Notes on the film pack

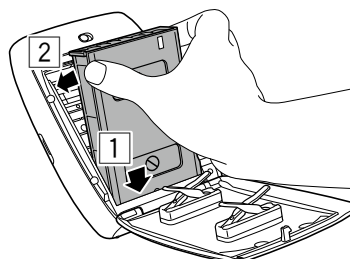
- Each FUJIFILM INSTAX MINI Instant Film Pack contains one black film protective cover and 10 film sheets.
- Do not remove the film pack from its inner bag before loading it into the printer.
- The film cover is ejected automatically when the film door is closed.

For details, refer to the instructions and warnings on the package of FUJIFILM INSTAX MINI Instant Film.

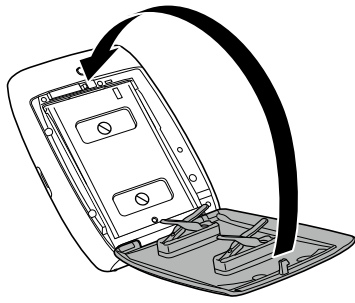
- 1 Slide & hold the Film door lock in place, then open the Film door.**



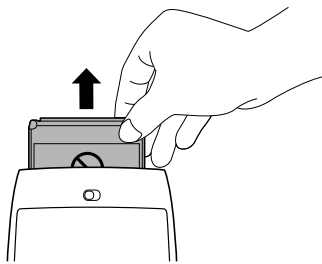
- 2 Insert an INSTAX MINI instant film pack by aligning the yellow marks on the film pack and the printer body.**



3 Close the Film door.

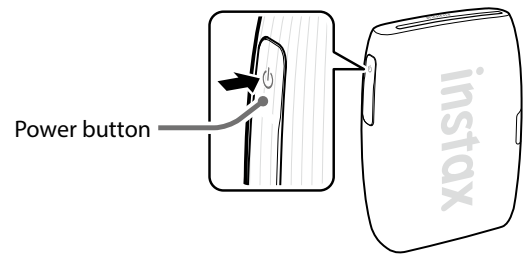


4 Remove the black film cover that is automatically ejected from the printer.



The INSTAX MINI LINK 3 Smartphone Printer is designed for use with INSTAX MINI Instant Film (sold separately) only.

Turning the Printer on/off



Press and hold the Power button for approximately 1 second to turn the printer on or off.
The LEDs light up when the printer is turned on.
The printer turns off automatically when not in use for a certain period of time (Auto turn-off function can be adjusted in the App).

Checking the Printer Status with the LED

The LED lights indicate the printer status.

| Indication | Status |
|--|---|
| Blue LED (flashing) | Firmware is being updated |
| Magenta LED (pulsing) | Reprinting |
| Cyan LED (flashing) | The data transfers to the printer |
| Yellow LED (static - the printer will turn off in 3-seconds) | Cannot be charged Low battery *If this continues even after charging, there may be a malfunction. In such cases, contact the applicable Fujifilm Customer Service/Repair Center. |
| Yellow LED (flashing) | Film ejection error occurred Please check to make sure the film ejection slot is not jammed and the Film door is securely closed. *If this continues to occur, please contact the applicable Fujifilm Customer Service/Repair Center. |

Pairing your Smartphone and the INSTAX MINI LINK 3 Printer; Printing

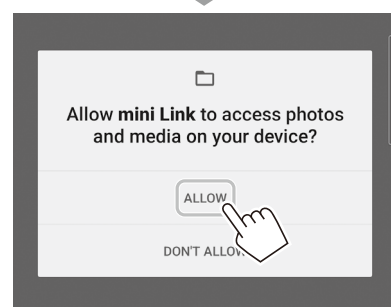
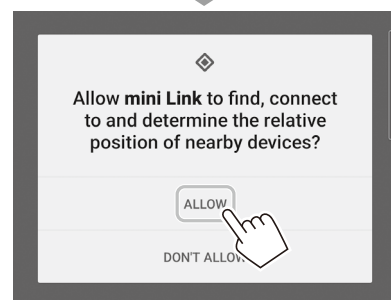
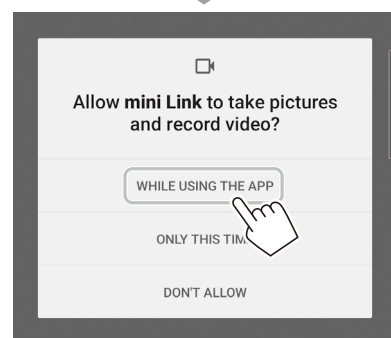
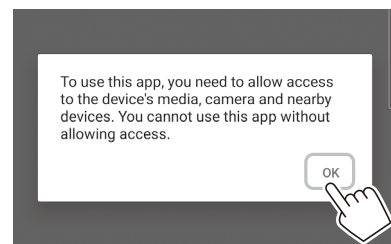
With the functions of the INSTAX MINI LINK Smartphone App, you can edit your favorite Smartphone images before printing by adding text, applying filters, and much more! See Page 4 on how to install the INSTAX MINI LINK Smartphone App or check out the following site: https://instax.com/mini_link_3/

When Pairing for the First Time

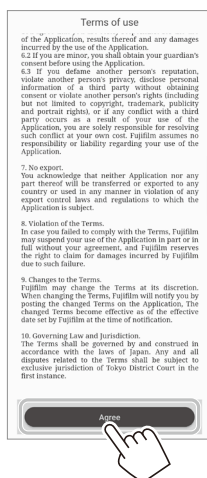
- 1 Start the downloaded INSTAX MINI LINK Smartphone App.



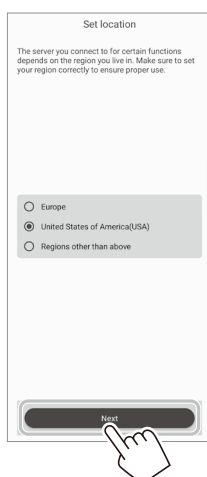
- 2 Click through the below pop-up windows to set up the printer.



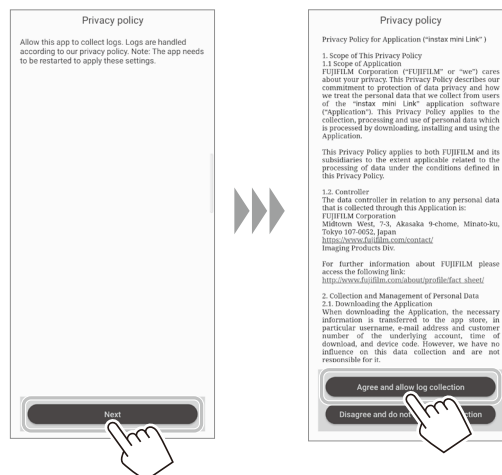
- 3 Read the Terms of Use, and tap the [Agree] bar.**
You must “agree” to the Terms of Use to complete the pairing.



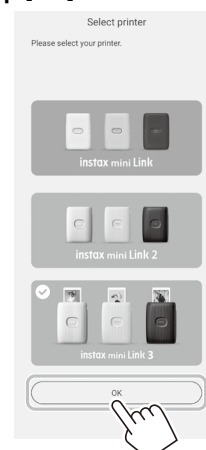
- 4 Select the usage area, and tap [Next].**
If you are using the printer in USA, select [United States of America (USA)].



- 5 Tap [Next], read the privacy policy, and tap [Agree and allow log collection].**
You must “Agree and allow log collection” to the Privacy Policy to complete pairing.



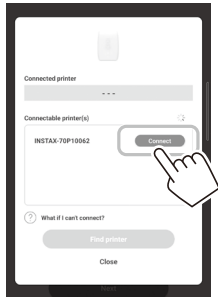
- 6 Select [INSTAX MINI LINK 3] on the Select printer screen, and tap [OK].**



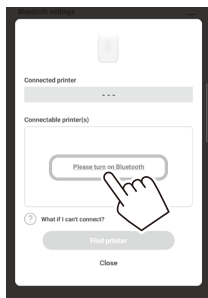
- 7 When the following screen appears, turn the printer on, and tap [Next].**



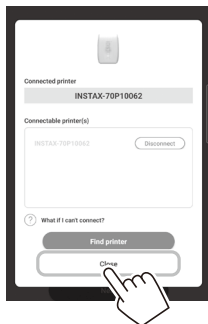
- 8 When a printer is detected, tap [Connect].**
 If multiple printers are detected, select the printer you would like to pair from the list.
 Locate the printer's identifier (device name) on the bottom of the printer.
 Make sure the printer is on during this step. If not, turn the printer on by pressing and holding the Power button for 1 second.



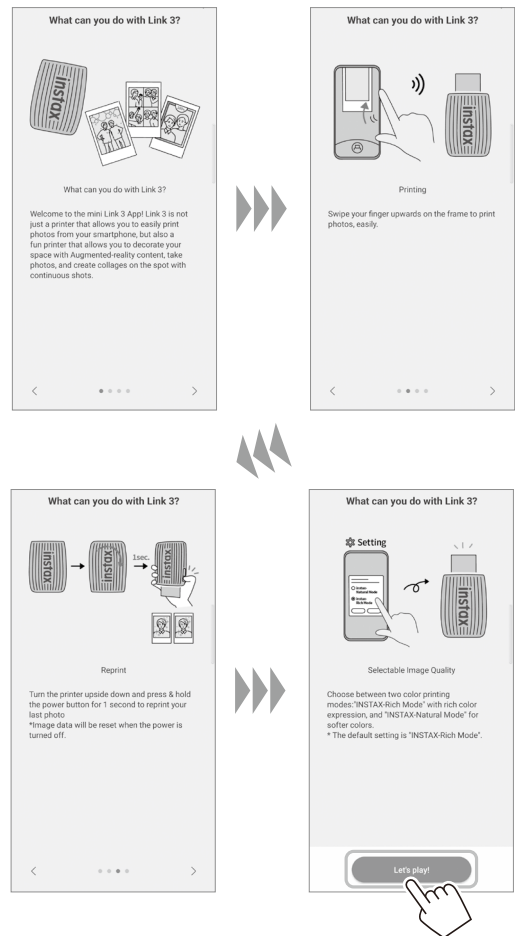
Note
 If your Bluetooth settings are switched off, tap [Please turn on Bluetooth] to put the Bluetooth settings on.



- 9 When your printer is paired, tap [Close].**



- 10 Quick instructions are displayed. Read the instructions and tap [Let's play!].**



- 11** You are now ready to use the printer. To select an image to print, click the Simple Print button on the home screen and select an image from your photo roll.



To edit your image, click on the below editing options on the bottom of the screen before printing.

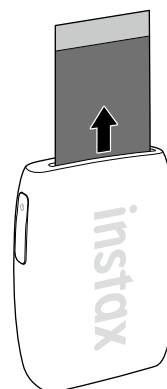
| | |
|--|--|
| | Enters text or attaches a sticker to images. |
| | Zooms up/down or rotates images. |
| | Applies a filter on images. |
| | Adjusts the brightness of images. |

- 12** Tap or swipe the image up on the screen to print your image.
After a slight transmission delay, the printer starts printing. You can also select the number of images to print during image transfer.



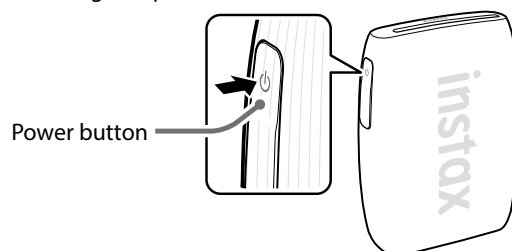
- 13** When the film has been fully ejected (the printer stops making a sound), grasp the edge of the film, then take it out.

Confirm the number of images remaining in your INSTAX MINI instant film pack on the Smartphone App screen.



When the Printer and Your Smartphone Are Already Paired

- 1** Press and hold the Power button for approximately 1 second to turn the printer on.
The LED lights up.



- 2** Start the downloaded INSTAX MINI LINK Smartphone App.

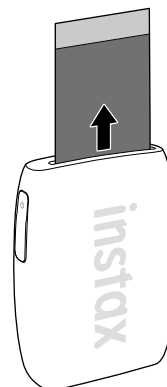


- 3** To select an image to print, click the Simple Print button on the home screen and select an image from your photo roll.



- 5** When the film has been fully ejected (the printer stops making a sound), grasp the edge of the film, then take it out.

Confirm the number of images remaining in your INSTAX MINI instant film pack on the Smartphone App screen.

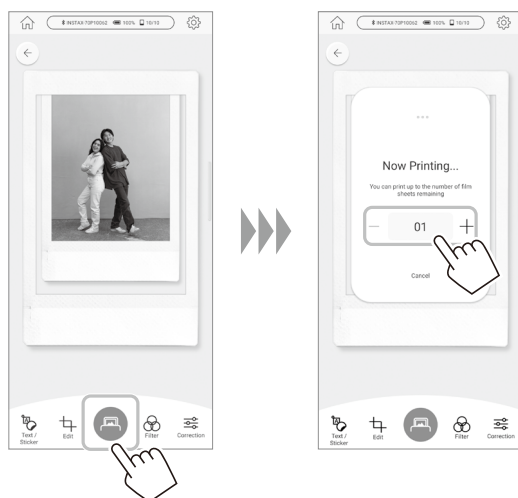


To edit your image, click on the below editing options on the bottom of the screen before printing.

| | |
|--|--|
| | Enters text or attaches a sticker to images. |
| | Zooms up/down or rotates images. |
| | Applies a filter on images. |
| | Adjusts the brightness of images. |

- 4** Tap or swipe the image up on the screen to print your image.

After a slight transmission delay, the printer starts printing. You can also select the number of images to print during image transfer.

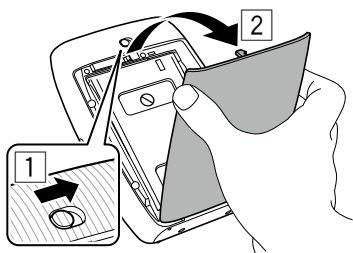


Unloading a used INSTAX MINI Instant Film Pack

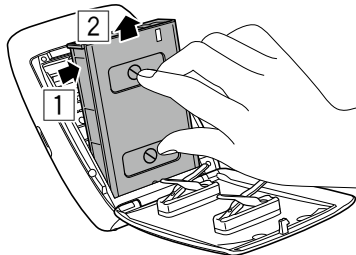
NOTE

Do not open the Film door until all 10 film sheets of the INSTAX MINI instant film pack have been used. Opening the Film door will expose any remaining, unused film sheets, rendering the remainder of the film pack unusable.

- 1 Slide and hold the Film door lock in place, then open the Film door.



- 2 Grasp the rectangular holes on the film pack, then pull film pack out from the printer. Properly dispose of used film pack.

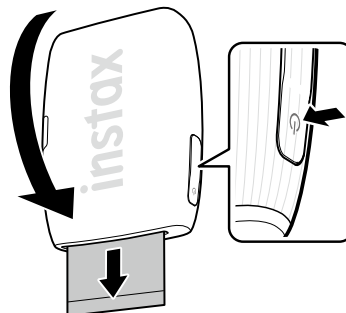


- Dispose of film packs in accordance with local disposal rules.

Reprinting an Image

You can reprint the image you last printed by using the reprint function.

Turn the printer over with the film ejection slot facing down and press the Power button.



Notes

- When the printer is paired to the App and the App is in INSTAX Camera Mode, you cannot use the reprint function.
- When you turn the printer off, the image you last printed before turning off the printer is deleted and the image cannot be re-printed. In such a case, print the image from the App.
- When using the reprint function and the printer is turned upside down, please be sure to keep the printer at least 4 in./10 cm away from any objects.

Controlling the INSTAX MINI LINK App with the Angle of the Printer and the Power Button

When this printer is linked with the App on your Smartphone or tablet, you can control the App by tilting the printer using the Smartphone App linked function. For details, refer to the FAQ of the INSTAX MINI LINK Smartphone App.

Note

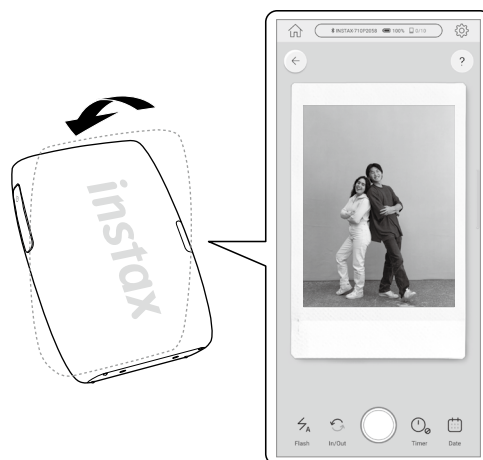
Make sure that [Enable App operation] is activated on the INSTAX MINI LINK App. When it is inactivated, this function is unavailable.

Controlling Zoom and Shutter When Using the INSTAX Camera Feature on the App

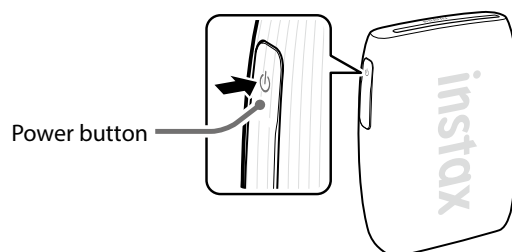
Tap [INSTAX Camera] to use the INSTAX Camera Feature.



Tilt the printer backward to zoom out.



Press the Power button to release the shutter.



Tilt the printer forward to zoom in.



instaxAiR Studio™ App Feature

instaxAiR studio™

Print fun INSTAX MINI photos with AR backgrounds and decorations. Just use the INSTAX MINI LINK App's INSTAX AIR STUDIO Feature to apply the AR background and decorations you want.

For more details, scan the QR code here or visit the below website.



https://instax.com/mini_link_3/

Important Notice for INSTAX AIR STUDIO Feature

The INSTAX AIR STUDIO App Feature is not fully compatible with certain Smartphone models, and it may have main subject detection limitations.

The following Smartphones are compatible with the INSTAX AIR STUDIO App feature (This list may be updated from time to time, as described below):

iOS

iPhone 15 Pro / iPhone 15 / iPhone 14 Pro / iPhone 14 /
iPhone 13 Pro Max / iPhone 13 / iPhone SE (3rd generation)

Android OS

Google Pixel 8 Pro / Google Pixel 8 / Google Pixel 7 Pro /
Google Pixel 7 / Galaxy S23 / Galaxy A52 5G

Scan the QR code below or visit the below website to see the latest, complete list of compatible Smartphone models and for details of detection limitations.



https://instax.com/mini_link_3/airstudio/

Click to Collage App Feature in the INSTAX MINI LINK App

Print collage photos created from a series of continuous shots using the App's Click to Collage Feature.

For more details, scan the QR code here or visit the below website.



https://instax.com/mini_link_3/

Specifications

| | |
|-----------------------------------|--|
| Recording method | 3-color exposure with OLED |
| Film used | FUJIFILM INSTAX MINI Instant Film (sold separately) |
| Image size | 2.4 in × 1.8 in/62 mm × 46 mm |
| Exposure pixel count | 800 × 600 dots |
| Exposure resolution | 12.5 dots/mm (318 dpi, 80 μm dot pitch) |
| Exposure gradation | RGB gradation of 256 colors |
| Interface | Bluetooth Ver. 5.1 |
| Printable image format | JPEG, PNG, HEIF, DNG |
| Print transmission time | Approximately 15 seconds for transmission and to start printing. Print development time approximately 90 seconds |
| Possible number of printed images | Approximately 100 (from full charge; number of prints depends on the usage conditions.) |
| Power supply | Lithium ion battery (internal type: not removable) |
| Charging time | Approximately 1.5 to 2 hours (depending upon environment temperature at time of charging) |
| Power consumption | Approximately 3 W |
| Operating environment | Temperature: +41°F to +104°F (+5 °C to +40°C) Humidity: 20% to 80% (no condensation) |
| Main unit dimensions | 3.54 in × 1.47 in × 4.92 in (90.0 mm × 37.3 mm × 125.0 mm) excluding projecting parts |
| Main unit weight | Approximately 0.46 lbs (210 g) excluding film pack |
| Supplied accessory | USB Type C cable (FZ00013220) Length: 11.8 in (30 cm) |

*The above specifications are subject to change.

Troubleshooting

Please check the following items before considering a problem to be a malfunction. If the problem persists even after taking action, please contact the Fujifilm service center for repair in your country or visit the website below.

https://instax.com/mini_link_3/en/support/faq/

If the following problem occurs...

| Problem | Possible causes and solutions |
|--|---|
| I cannot turn on the printer. | <ul style="list-style-type: none"> The battery may not be charged. Please charge the printer. You may not have pressed the Power button long enough. Press and hold the Power button for approximately 1 second. |
| The battery loses its charge quickly. | If you use the printer in a very cold environment, the battery will drain quickly. Move the printer to a warmer environment and allow it to adjust to room temperature before printing. |
| The printer turned off during use. | The battery level may be low. Please charge the printer. |
| Charging does not start. | Make sure that the USB power adapter plug is properly connected to the power outlet. |
| It takes too long to charge. | At low temperatures, charging may take longer. |
| Charging does not start or prematurely stops. | Charge the battery in a temperature range of 41°F to 104°F (5°C to 40°C). If you cannot charge the printer in this range, contact the applicable Fujifilm Customer Service/Repair Center. |
| The printer does not work properly. | <ul style="list-style-type: none"> There may be a temporary malfunction. Please press the reset button. If it still does not work properly, please contact our repair service center for repair. The battery may not be charged. Please charge the printer. |
| The film pack does not load or does not load smoothly. | <ul style="list-style-type: none"> Please use FUJIFILM INSTAX MINI instant film only (INSTAX SQUARE or INSTAX WIDE instant film cannot be used). Align the yellow mark on the film pack with the printer alignment mark (yellow) and load it. |
| The photo does not properly eject. | <ul style="list-style-type: none"> The film pack may be misaligned due to shock such as vibration or dropping. Please load a new film pack. If the film pack is jammed, turn the printer off and turn it on again. If the problem persists, remove the jammed film and then load a new film pack. |
| Some or all of the finished prints are white. | Do not open the film door until the film is used up. If the film door is opened with film remaining, the film may be exposed and the exposed area may become white. |

| Problem | Possible causes and solutions |
|---|--|
| The print is uneven. | <ul style="list-style-type: none"> Do not shake, bend, fold or hold the print immediately after it is printed. Do not obstruct the film ejection slot. |
| I cannot reprint images. | The stored image is deleted when the printer is turned off. |
| The function that is used by tilting the printer does not work. | Confirm that [Enable App operation] on the INSTAX MINI LINK App is activated. |


IMPORTANT SAFETY NOTICE

This product has been designed with safety in mind, and to provide safe operation when handled correctly and in accordance with the instructions in this User's Guide. It is important that both the product and the INSTAX MINI instant film pack are handled properly and used only to print photos as instructed in this User's Guide and in the INSTAX MINI instant film pack instructions. For your ease and safety, strictly follow the instructions in this User's Guide. Keep this User's Guide in a safe, convenient place for easy future reference as needed.


WARNING

This symbol indicates danger, which could result in product damage, injury or death. Follow the instructions indicated to avoid damage to the printer or injury.









WARNING

 If one of the following cases occur, immediately unplug the USB Type C cable, turn the printer off, refrain from any further use of the printer and call the applicable Fujifilm Customer Service Center:

- The printer becomes hot, emits smoke, has a burnt smell, or otherwise seems abnormal.
- The printer is dropped into water, or foreign objects like water, sand, dirt or metal get inside the printer.

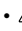
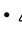

 The printer has a built-in battery. Do not subject it to heat, expose it to an open flame, drop it, or otherwise apply impact to it. Doing so may cause the printer to explode, resulting in injury.

WARNING

-  Never attempt to take this product apart. You may be injured.
-  All repairs should be handled solely by Fujifilm. Injury may result from attempts to self-assess or repair this printer.
-  If this product is dropped or damaged so that the inside is showing, do not touch it. Call the applicable Fujifilm Customer Service Center.
-  Do not touch any parts which are inside the Film door. You may be injured.
-  Never get this product wet or handle it with wet hands. Doing so may result in electric shock and injury.
-  Promptly unplug the USB Type C cable once battery is fully charged. Printer will not over-charge.
-  Keep out of the reach of small children. This product could cause injury in the hands of a child.
-  Do not cover or wrap the printer or USB AC power adapter (sold separately) in a cloth or blanket, or otherwise place the printer in the sun or an environment where heat may build up. This could distort the casing or cause a fire.

Printer Care

■ Handling the Printer

-  CAUTION - Do not expose to excessive heat such as sunshine, fire or the like during use, storage or transportation. An explosion or leakage of flammable liquid or gas could result. Also, ensure proper disposal in accordance with the instructions below.
-  CAUTION - Do not remove or attempt to remove the lithium battery. Without limitation, do not expose or attempt to expose the camera or the lithium battery to fire or a hot oven. Do not attempt to damage, mechanically crush or cut the lithium battery, as an explosion could result.
-  CAUTION - Do not subject to extremely low air pressure at high altitude. An explosion or the leakage of flammable liquid or gas could result.

■ Printer Care

1. Do not open the Film door until all 10 film sheets of the INSTAX MINI instant film pack have been used. Opening the Film door may expose any remaining, unused film sheets, rendering the remainder of the film pack unusable.
2. Your printer is a precision instrument. Do not get it wet or drop it. Also, do not expose it to sand, dust or dirt.
3. Do not use cleaning products or solvents such as those with bleach or alcohol to remove dirt. Wipe with a damp cloth if and as necessary.
4. Keep the film chamber and printer interior clean to avoid damaging the film.
5. In hot weather, do not leave your printer in hot places such as in a car or on the beach. Do not leave it in damp places or places where weather exposure could result.
6. Moth repellent gas such as naphthalene may affect your printer and instant photos. Store your printer and instant photos in a place where exposure to harmful cleaning or other household elements will be avoided.
7. Note that the temperature range within which your printer can be used is 41°F to 104°F (5°C to 40°C).
8. Take great care to ensure that your instant photos do not violate copyright, image rights, privacy or other personal rights and do not offend public decency. Actions that violate the rights of others, that are contrary to public decency, or that constitute a nuisance may be punishable by law or otherwise legally actionable.
9. This printer is designed for personal/household and limited commercial use.

■ Charging the Battery

The battery is not charged at shipment. Charge the battery completely before use.

Charge the battery using the supplied USB Type C cable and a USB AC adapter (sold separately) from your Smartphone. Charging times will increase at ambient temperatures below 50°F (10°C) or above 95°F (35°C). Do not attempt to charge the battery in environments with temperatures above 104°F (40°C); at temperatures below 41°F (5°C), the battery will not charge.

■ Battery Life

At normal temperatures, the battery can be recharged about 300 times. A noticeable decrease in the length of time the battery will hold a charge indicates that it has reached the end of its service life.



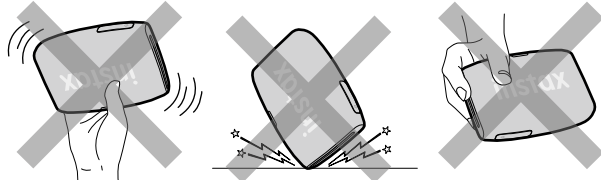
The "CE" mark certifies that this product satisfies the requirements of the EU (European Union) regarding safety, public health, environment and consumer protection. ("CE" is the abbreviation of Conformité Européenne.)

■ Caution: Handling the Battery

⚠ CAUTION - The battery and printer body may become warm to the touch after extended use. This is normal.

■ Required certification markings are located inside the film chamber.

■ Cautions During Printing



Do not shake the printer while printing.

Do not drop the printer while printing.

Do not cover the film ejection slot while printing.

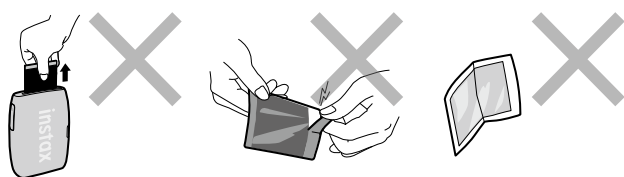
■ INSTAX MINI Instant Film and Print Care

This printer uses INSTAX MINI instant film, sold separately. See FUJIFILM INSTAX MINI instant film pack use instructions. Follow all instructions for safe and proper use, including:

1. Keep the film in a cool place. Do not leave the film in a place where the temperature is extremely high (e.g., in a closed car) for many hours.
2. Do not puncture, tear, or cut INSTAX MINI instant film. If film becomes damaged, do not use.
3. When you load a film pack, use the film as soon as possible.
4. If the film has been kept in a place where the temperature is extremely high or low, bring it to room temperature before loading or starting to print photos.
5. Be sure to use the film before the expiration or "Use Before" date.
6. Avoid airport checked luggage inspection and other strong X-ray illumination. Such exposure may cause fogging and otherwise affect your unused film. Carrying your printer and film onto an aircraft in your carry-on luggage is recommended. (Check with each airport for more information.)
7. Avoid exposing the developed instant photos to strong light, and keep them in a cool, dry place.
8. ⚠ CAUTION - Do not puncture or cut this film as it contains a small amount of caustic paste (high alkaline). Never let children or animals put the film into their mouth. Also pay attention so that the paste does not come into contact with skin or clothes.
9. ⚠ CAUTION - If the paste inside the film comes into contact with skin or clothes, immediately wash off with plenty of water. If the paste comes into contact with the eyes or mouth, immediately wash the area with plenty of water and contact a doctor. Note that the alkaline inside the film remains active for about 10 minutes after the photo has been printed.

⚠ CAUTION - When Handling INSTAX MINI Instant Film and Photos

See below for film activities to be avoided.



Bluetooth® Devices: Cautions

IMPORTANT: Read the following notices before using the product's built-in Bluetooth transmitter.

■ Use only as part of a Bluetooth network.

Do not use in applications requiring a high degree of reliability, for example in medical devices or other systems that may directly or indirectly impact human life. When using the device in computer and other systems that demand a greater degree of reliability than Bluetooth networks, be sure to take all necessary precautions to ensure safety and prevent malfunction. FUJIFILM Corporation and its affiliates do not accept liability for damages resulting from unauthorized use.

■ Use only in the country in which the device was purchased.

This device conforms to regulations governing Bluetooth devices in the country in which it was purchased. Observe all location regulations when using the device. FUJIFILM Corporation and its affiliates do not accept liability for problems arising from use in other jurisdictions.

■ Wireless data (images) may be intercepted by third parties.

FUJIFILM Corporation and its affiliates are not responsible for intercepted transmissions, or for unintended image uses.

■ Do not use the device in locations subject to magnetic fields, static electricity, or radio interference.

Do not use the transmitter in the vicinity of microwave ovens or in other locations subject to magnetic fields, static electricity, or radio interference that may prevent reception of wireless signals. Mutual interference may occur when the transmitter is used in the vicinity of other wireless devices operating in the 2.4 GHz band.

■ The Bluetooth transmitter operates in the 2.400GHz – 2.4835GHz. The maximum radio-frequency power is 9.10 mW.

■ This device operates on the same frequency as commercial, educational, and medical devices and wireless transmitters.

It also operates on the same frequency as licensed transmitters and special unlicensed low-voltage transmitters used in radio-frequency identification tracking systems for assembly lines and in other similar applications.

■ To prevent interference with the above devices, observe the following precautions.

Confirm that the radio-frequency identification transmitter is not in operation before using this device. If you notice that this device causes interference in low-voltage radio-frequency identification tracing systems, contact a Fujifilm representative.

■ The following may be punishable by law:

- Disassembly or modification of this device.
- Removal of device certification labels.

For customers in the USA:

Contains FCC ID : W2Z-03000015

FCC Statement

This device complies with part 15 of the FCC Rules. Operation is subject to the following two conditions: (1) This device may not cause harmful interference, and (2) this device must accept any interference received, including interference that may cause undesired operation.

For more information, access the website below.

https://instax.com/mini_link_3/en/spec/

CAUTION

This equipment has been tested and found to comply with the limits for a Class B digital device, pursuant to Part 15 of the FCC Rules. These limits are designed to provide reasonable protection against harmful interference in a residential installation. This equipment generates, uses, and can radiate radio frequency energy and, if not installed and used in accordance with the instructions, may cause harmful interference to radio communications. However, there is no guarantee that interference will not occur in a particular installation. If this equipment does cause harmful interference to radio or television, which can be determined by turning the equipment off and on, the user is encouraged to try to correct the interference by one or more of the following measures:

- Reorient or relocate the receiving antenna.
- Increase the separation between the equipment and receiver.
- Connect the equipment into an outlet on a circuit different from that to which the receiver is connected.
- Consult the dealer or an experienced radio/TV technician for help.

Changes or modifications not expressly approved by Fujifilm responsible for compliance could void the user's authority to operate the equipment.

This transmitter must not be co-located or operated in conjunction with any other antenna or transmitter.

The available scientific evidence does not show that any health problems are associated with using low power wireless devices. There is no proof, however, that these low power wireless devices are absolutely safe. Low power wireless devices emit low levels of radio frequency energy (RF) in the microwave range while being used. Whereas high levels of RF can produce health effects (by heating tissue), exposure of low-level RF that does not produce heating effects causes no known adverse health effects. Many studies of low-level RF exposures have not found any biological effects. Some studies have suggested that some biological effects might occur, but such findings have not been confirmed by additional research. This device has been tested and found to comply with FCC radiation exposure limits set forth for an uncontrolled environment and meets the FCC radio frequency (RF) Exposure Guidelines.

Notes on the Grant

To comply with Part 15 of the FCC Rules, this product must be used with a Fujifilm-provided USB Type C cable.

For customers in Canada:

Contains IC : 7736B-03000014

CAN ICES-003 (B)/NMB-003 (B)

This device contains licence-exempt transmitter(s)/receiver(s) that comply with Innovation, Science and Economic Development Canada's licence-exempt RSS(s). Operation is subject to the following two conditions:

1. This device may not cause interference.
2. This device must accept any interference, including interference that may cause undesired operation of the device.

The available scientific evidence does not show that any health problems are associated with using low power wireless devices. There is no proof, however, that these low power wireless devices are absolutely safe. Low power wireless devices emit low levels of radio frequency energy (RF) in the microwave range while being used. Whereas high levels of RF can produce health effects (by heating tissue), exposure of low-level RF that does not produce heating effects causes no known adverse health effects. Many studies of low-level RF exposures have not found any biological effects. Some studies have suggested that some biological effects might occur, but such findings have not been confirmed by additional research. This device has been tested and found to comply with ISED radiation exposure limits set forth for an uncontrolled environment and meets RSS-102 of the ISED radio frequency (RF) exposure rules.

Proper Disposal of Smartphone printer – US and Canada



Disposal of Electric and Electronic Equipment in Private Households
Disposal of used Electrical & Electronic Equipment (Applicable in the European Union and other European countries with separate collection systems)

This symbol on the product, the full version of the User's Guide, Quick Start Guide, in the limited product warranty, and/or on its packaging indicates that this product shall not be treated as household waste.

Instead it should be taken to an applicable collection point for the recycling of electrical and electronic equipment.

By ensuring this product is disposed of correctly, you will help prevent potential negative consequences to the environment and human health, which could otherwise be caused by inappropriate waste handling of this product.

The recycling of materials may help to conserve natural resources.

For more detailed information about recycling of this product, please contact your local city recycling office, your household waste disposal service or the authorized FUJIFILM dealer from which you purchased the product.

For proper disposal in the United States at product end-of-life, please contact 1-800-800-3854 Option #1 INSTAX.

For proper disposal in Canada at product-end-of-life, please contact 1-800-461-0416.

For proper disposal in Latin America at product end-of-life, please contact your local FUJIFILM distributor or dealer for disposal instructions.

Information for Fujifilm in the United States

FUJIFILM North America Corp.
200 Summit Lake Drive
Valhalla, New York 10595, USA
1-800-800-3854 Option #1 INSTAX

Information for Fujifilm in Canada

FUJIFILM Canada Inc.
600 Suffolk Court
Mississauga, Ontario L5R 4G4, Canada
1-800-461-0416

If you have any inquiries about this product, please contact the applicable Fujifilm Customer Service/Repair Center, or access the website below.

<https://www.fujifilm.com/>

The Bluetooth® word mark and logos are registered trademarks owned by the Bluetooth SIG, Inc., and any use of such marks by Fujifilm is under license.

Independent JPEG Group (IJG) Licenses

The software used in the INSTAX MINI LINK 3 Smartphone Printer is based in part on the work of the Independent JPEG Group.

FUJIFILM, INSTAX, INSTAX MINI, INSTAX SQUARE, INSTAX WIDE, INSTAX MINI LINK and INSTAX AIR STUDIO are trademarks of FUJIFILM Corporation and its affiliates.

© 2024 FUJIFILM Corporation. All rights reserved.

FUJIFILM

FUJIFILM Corporation

7-3, AKASAKA 9-CHOME, MINATO-KU, TOKYO 107-0052, JAPAN